



INTERNATIONAL OFFSHORE ENGINEERING
& DEVELOPMENT COMPANY

COMPANY DOSSIER

What you want from the future...
We bring it to the present.



“The Execution of the work based on specifications, time management and budgetary limits are one of IOED main objectives. With our capabilities, knowledge and experience we are able to compete in the international and domestic markets as facilitators for successful project implementation in the worldwide oil and naval industry. IOED also pays special attention to the continuity of services and company ethics in addition to the capabilities and the availability of local expertise and subcontractors who provide us with the required services for the implementation of our projects.

IOED will continue working hard, gaining experience, managing risks and investing in human resources, in order to seek new opportunities, capitalize on our strengths and be responsible to our clients and partners.”

IOED Team.

SUMMARY

SUMMARY

>	WHO WE ARE	06
	MISSION AND VISSION	07
	CORPORATE CULTURE	08
	ALLIANCE	09
	PRESENCE	10
	HSEQ	11
	TALENT MANAGEMENT	13
	EPC	15
	SHIP MANAGEMENT	24
	FLEET	26

WHO WE ARE? AND MISSION AND VISSION

WHO WE ARE?

IOED it's a Engineering, Procurement and Construction Company specializes in offshore oil projects and also offers an extensive rage of product / services in the Shipyard Industry. It comes from an important and large group of companies (General Contractors) since 20 years ago.

Our activities include:

- Supply of Vessels for Offshore Oil Terminal Operations.
- Conceptual Engineering.
- Basic Engineering.
- Detailed Engineering.
- Flow Station Construction and Management.
- Integrated logistics services for Construction Projects.

IOED has the best team including more than 16 engineers in all areas, over 70 people between technical and administrative staff in continuous training and preparation with important foreign alliances.

MISSION AND VISSION

MISSION

In IOED we support our customers and provide them solutions related to the oil and shipping industry, using cutting-edge and innovative technologies to constantly improve and reach excellent quality safety and environmentally standards, always adding value and providing solutions because we have a highly qualified talent to help our customers build their dreams and bring them to present what they want from the future.

VISSION

In IOED we want to make proud our stakeholders in the development of activity's in the oil and shipping industry worldwide, fostering growth through the development of traditional energy-related projects and initiatives aimed at supporting alternative energies with solutions devised by people so constantly investigating how best to bring to present what our clients want from the future.

CORPORATE CULTURE ALLIANCES

CORPORATE CULTURE

IOED follows a code of ethics very strict and precise with total transparency, taking responsibility towards all the ones involved.

We take responsibility towards our clients very seriously doing all the necessary procedures to ensure the satisfactory execution of our projects. It is our belief that accountability towards the client not only improves the quality of our service, but also improves client relations and the ability to get in contact with new potential clients.

Another matter really important to us, is to provide the best working conditions to our employees with the goal of establishing the best safety practices by following international guidelines for health, safety and environmental standards. To IOED is essential to maintain a constant professional enrichment regarding our staff, knowing that we can offer only the best for our workers and thereby offer the very best to our customers.

ALLIANCES

Alliances are fundamental to IOED success. Our global network strategies allow us to develop new technologies and business fields through different partnerships with some of the world's most successful companies of the oil industry, mainly oriented to offshore projects.

PRESENCE

HSEQ

PRESENCE

HSEQ

IOED's scope knows no bounds; we find ourselves in the ability to execute projects regardless of their geographical area. These range from projects related to the offshore oil industry, to the naval construction allied with some of the most recognized shipyards in Europe and Asia.

We also have a strong network of business partners that serve as correspondents who advise IOED in different activities and projects, allowing us to bring our field of action to all boundaries, managing to provide the best quality in our products and services.

- Panamá.
- Netherlands.
- Turkey.
- China.
- Singapore.
- USA.
- Germany.
- Canada.

Safety remains at the heart of all our operations and we are committed to an incident-free workplace, every day, everywhere. We continue to minimize the impact of our activities on the environment.

Safety is one of our Core Values that reinforces our culture of safe behavior. Effective safety, health and environmental leadership is essential in everything we do.

Requires an active commitment to HSEQ from all our people and our contractors in all work activities. Line managers are responsible and accountable for ensuring compliance with all HSEQ policies and procedures and this Corporate HSEQ Policy.

We will always communicate openly on HSEQ issues with our stakeholders and share with them our experience and knowledge of successful HSEQ initiatives.

TALENT MANAGEMENT

HSEQ

COMPLIANCE WITH RELEVANT LEGISLATION

IOED standards will comply with all applicable laws and regulations in the countries where we operate.

RISK MANAGEMENT

IOED will strive to mitigate the impact of any foreseeable hazards, which may endanger health, safety and the environment, or could affect the quality of products and services it provides. This will be achieved through formal risk assessments as required per IOED Policies and Procedures.

The process of risk management forecast possible threats and opportunities in a project and enables managers to program for threat reduction and its effects in order to take advantage of opportunities to accomplish IOED's strategic goals.

To achieve all the above IOED has established its risk management department benefiting from professional experts and software to identify any type of risk in projects as per the systematic approach for project identification and providing the project managers with the required decision making tools.

In IOED we believe in people with vision, who are always looking to give a little more and exceed targets within a challenging environment. We value those who can see beyond their work and understand how their actions can make a difference and ensure success. We believe in people who have the ability to improve their surroundings, generating new ideas, and different ways of perceiving and doing things.

Create the necessary conditions for each person to have more and better opportunities for development, teamwork and feel valued for what may contribute, are one of the most important purposes of the Human Resource Management of IOED. Our challenge is to attract, retain and develop talent that would ensure success at every opportunity, on every project.

Our overall Talent Management strategy pays special attention to the personal development for those working in IOED. As pillars of this strategy, we have programs and training courses focused on the personal and professional development of our employees, maintaining continuous learning in order to meet every challenge and every goal that is proposed.

TALENT MANAGEMENT

EPC

TRAINING

In order to develop our employee qualifications with the intention of enabling them to manage company operations at a higher level of competency, IOED training development center conducts various in house trainings and coordinates for outside training courses. Such courses may vary according to the employees' needs and may include technical training for our engineering staff, management courses for our managers and English language programs for our staff.

Through our Engineering & Projects, and strategic alliances with global companies, IOED has developed a solid base of technological knowledge, advancing technology transfer programs and training that has allowed us carry out projects in all stages since Visualization and conceptualization stage to its implementation and commissioning. IOED offers a wide range of multidisciplinary services in the field of Engineering, Procurement, Construction and Project Management to cater the requirements of our Clients in the Oil, Petrochemical, Energy, Industrial and Environment sector.

ENGINEERING

Through our Engineering & Projects, and strategic alliances with global companies, IOED has developed a solid base of technological knowledge, advancing technology transfer programs and training that has allowed us carry out projects in all stages since Visualization and conceptualization stage to its implementation and commissioning. Armed with a team of highly trained technical experts, IOED provides innovative engineering solutions adapted to the needs of the clients for effective project implementation in Quality, Cost and Time. shore (Offshore).



EPC

Expertise in the area of engineering discipline covers IOED Civil Engineering, Structures, Mechanical, Electrical, Instrumentation and Process, focused on the requirements and standards of oil and industry, both onshore and offshore (Offshore).

As part of its Engineering activities, IOED offers its clients the following services in each of the phases for the implementation of their projects:

Conceptual Display

- Conceptual Engineering.
- Environmental Studies.
- Feasibility Studies.
- Technology Assessment.
- Master Plans.
- Scope Definitions.
- Field Survey

EPC

Design

- Basic Engineering.
- FEED (Front-End Engineering Development).
- Detail Engineering.
- Cost Estimates.
- Operability Studies.

Implementation

- Engineering Contract.
- Planning
- Preparation of Bid Packages.
- Technical and Economic Evaluation of Offers.
- Cost Control.



EPC

PROCUREMENT

:Through its Department of Procurement, IOED provides a comprehensive service that includes procurement of equipment, machinery and materials both domestic and foreign origin, including the processes of Sale, Shipping, Inspection, Transportation, Customs and Nationalization final delivery to the Customer.

IOED has a strong and experienced organization able to satisfy most complex projects requirements. We count with a supplier's global and local network. This structure allows IOED, offering its customers quality products and services at the best prices.

As part of the procurement management process and supply chain, IOED visit suppliers regularly, performs inspections of shipments and constant orders and maintains close relations with other logistics firms, which provides the basis for ensure that all products and services are provided in a timely manner in accordance with the expected quality and optimizing costs.

EPC

As part of our corporate policy, IOED support the National industries, promoting and increasing the local content of our projects, generating social contribution to communities where the projects are developed.

CONSTRUCTION

IOED has a reputation as a supplier of construction services, quality oriented with a successful record of accomplishment in the oil industry. IOED through the years has provided the expertise to plan and execute complex projects with their own resources oversight by implementing construction procedures with best practices and the highest standards of industrial safety.

IOED maintain good relations with the government agencies and local authorities, which creates a climate of confidence to our customers, and avoid delays execution of works.

EPC

As part of its construction activities IOED offers its clients the following services:

- Management of Contractors.
- Cost Control.
- Material Control.
- Operation and Maintenance Manuals.
- Security.
- Industrial Relations.
- As-Built Drawings.
- Pre-Commissioning, Commissioning and Start.
- Provision of personnel.
- Supervision.
- Inspection.
- Training.

EPC

IOED, provides expertise in construction of Civil, Mechanical, Electrical and Instrumentation, Laying of Pipelines, Offshore Installations for oil exploration and production.

- Construction of modules (Living Quarters).
- Construction of plants for the Plastic Industry and Food.

PROJECT MANAGEMENT

Throughout this time, IOED has demonstrated its capacity develop and successful manage multidisciplinary projects. Regularly, IOED acts in their projects as a general contractor and single point of contact with their customers, instead of entrusting the overall responsibility for the successful completion of their project plans.

With experienced project experts, IOED covers all aspects of project management, covering the early development and conceptualization stage, through engineering, procurement and construction.

EPC

In his role as general and based on its expertise in project management contractor, IOED leads the activities of all Contractors and Sub-Contractors involved, integrating processes and systems for the full completion of each project on time and expected cost.

This process is supported by a risk management system, which allows IOED give our Customers the best results in quality, time and cost in the execution of projects entrusted to them

PROJECT INSPECTION



EPC

SHIP MANAGEMENT

SHIP MANAGEMENT

Ship management in IOED offers an extensive range of products and services in the shipbuilding industry. Among them, we can find both the acquisition of vessels and their support and maintenance. With trained staff and extensive experience, we have achieved in addition to meeting the needs of our clients a great impact on the Venezuelan oil industry

CONSULTING AND ACQUISITION

IOED through alliances with major shipyards and foreign companies specialized in the Marine sector, provides technical, legal, financial and administrative advice at all stages of the process that represents the acquisition of a vessel. Starting from design and financial support to carry out the transport ship and its final delivery to the customer.

CONSTRUCTION MANAGEMENT

IOED has the support of major qualified to track and monitor their naval projects overseas companies. This, coupled with his human talent, allows them to track the various activities comprising the construction process; such as planning, inspection, monitoring, control correction.

SHIP MANAGEMENT

SUPPORT, MAINTENANCE AND SERVICE TECHNICIAN

To perform this task, the ship management holds an appropriate infrastructure and equipment for the provision of preventive and corrective maintenance, respecting the highest standards of quality globally accepted. Which results in a great operating efficiency, a reduction in output over time and reduced costs, improving the life of the naval unit.

PROCUREMENT OF EQUIPMENT AND SUPPLIES MARINE

Because of the relationships and experience with the marine industry today, IOED has important partnerships with distributors and manufacturers of marine inputs, among which we can offer: navigation equipment, mechanical, electrical, electronics, seamanship, trailer, etc.; thus providing our customers with quality and availability to meet your requirements. Coupled with this, we provide our customers the necessary logistical support from the receipt of the product or distribution to the respective office.

FLEET

FLEET

ARAÑERO

Hull Number: NB52

Lenght: 30,25m

Beam: 11,75m

Depht: 5,25m

Gross Tonnage: 463 TONS

Net Tonnage: 139 TONS

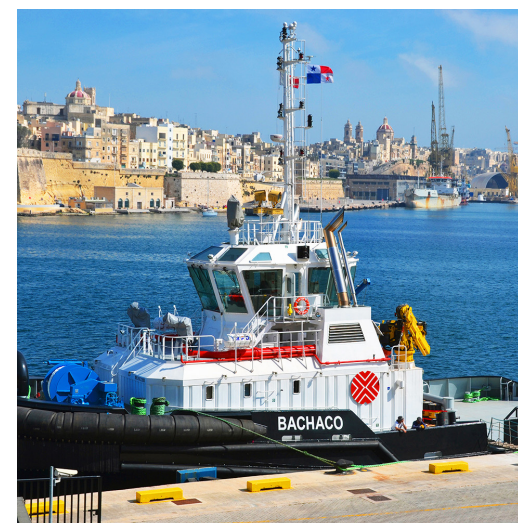
Engines: 2 × Caterpillar 3516C, 2.682hp

Propulsion: 2 × Schottel SRP 1515CP

Class: I + Hull + Mach,
Tug, FI-FI I water spraying,
Unrestricted Navigation + AUT-UMS

Designer: Robert Allan ASD 3070

Bollard Pull: 70 TONS



BACHACO

Hull Number: NB53

Lenght: 30,25m

Beam: 11,75m

Depht: 5,25m

Gross Tonnage: 463 TONS

Net Tonnage: 139 TONS

Engines: 2 × Caterpillar 3516C, 2.682hp

Propulsion: 2 × Schottel SRP 1515CP

Class: I + Hull + Mach,
Tug, FI-FI I water spraying,
Unrestricted Navigation + AUT-UMS

Designer: Robert Allan ASD 3000

Bollard Pull: 70 TONS

FLEET

FLEET

TRIBILIN

Hull Number: NB06-19

Lenght: 32,50m

Beam: 11,70m

Depht: 5,60m

Gross Tonnage: 463 TONS

Net Tonnage: 139 TONS

Engines: 2 x Caterpillar 3516C, 2.816hp

Propulsion: 2 x Schottel SRP 1515CP

Class: I + Hull + Mach,
Escort Tug, Savage Tug, FI-FI 1 water spraying,
Unrestricted Navigation + AUT-UMS

Designer: Cintraval-Defcar

Bollard Pull: 72 TONS



FLEET

JAZMIN

Hull Number: YX3193

Lenght: 32m

Beam: 11,60m

Depht: 5,36m

Gross Tonnage: 472 TONS

Net Tonnage: 141 TONS

Engines: 2 x Caterpillar 3516C, 2.682hp

Propulsion: 2 x Schottel SRP 1515FP

Class: +100 A1 Tug,
FI-FI Ship I (2400m3/h), water spraying,
LMC

Designer: Robert Allan Ltd. ASD 3200

Bollard Pull: 78 TONS





FLEET

VIOLETA

Hull Number: 5063

Lenght: 32m

Beam: 12,40m

Depht: 5,40m

Gross Tonnage: 493 TONS

Net Tonnage: 147 TONS

Engines: 2 x Caterpillar 3516C, 2.682hp

Propulsion: 2 x Schottel SRP 1515FP

Class: +100A1 Tug,

FI-FI Ship I (2400m3/hr) water spraying, +IWS
LMC-UMS

Designer: Robert Allan Ltd. ASD 208-117

Bollard Pull: 71 TONS



FLEET

HUGUITO

Hull Number: YX3191

Lenght: 32m

Beam: 11,60m

Depht: 5,36m

Gross Tonnage: 472 TONS

Net Tonnage: 141 TONS

Engines: 2 x Caterpillar 3516C, 2.682hp

Propulsion: 2 x Schottel SRP 1515FP

Class: +100A1 Tug,

FI-FI Ship I (2400m3/h) water spraying,
LMC

Designer: Robert Allan Ltd. ASD 3200

Bollard Pull: 78 TONS





FLEET

LOTO

Hull Number: 5062

Lenght: 32m

Beam: 12,40m

Depht: 5,40m

Gross Tonnage: 493 TONS

Net Tonnage: 147 TONS

Engines: 2 x Caterpillar 3516C, 2.682hp

Propulsion: 2 x Schottel SRP 1515FP

Class: +100A1 Tug,

FI-FI Ship1 (2400m3/hr)water spraying, +IWS

LMC-UMS

Designer: Robert Allan Ltd.

Bollard Pull: 73 TONS



FLEET

AMAPOLAI

Hull Number: NB06-20

Lenght: 30m

Beam: 12,60m

Depht: 5,50m

Gross Tonnage: 428 TONS

Net Tonnage: 128 TONS

Engines: 2 x Caterpillar 3516C, 2.816hp

Propulsion: 2 x Schottel SRP 1515CP

Class: I + Hull + Mach,

Escort Tug, Savage Tug, FI-FI 1 water spraying,

Unrestricted Navigation + AUT-UMS IWS

Designer: Robert Allan Ltd. ASD Tug 30/70

Bollard Pull: 73 TONS



FLEET

MARGARITA I

Hull Number: YX3192

Lenght: 32m

Beam: 11,60m

Depht: 5,36m

Gross Tonnage: 472 TONS

Net Tonnage: 141 TONS

Engines: 2 x Caterpillar 3516C, 2.682hp

Propulsion: 2 x Schottel SRP 1515FP

Class: I + Hull + Mach,

Tug, FI-FI I water spraying,

Unrestricted Navigation + AUT-UMS IWS

Designer: Robert Allan Ltd. ASD 210-077

Bollard Pull: 75 TONS



FLEET

GARDENIA

Hull Number: NB-0622

Lenght: 32,50m

Beam: 11,70m

Depht: 5,6m

Gross Tonnage: 463 TONS

Net Tonnage: 139 TONS

Engines: 2 x Caterpillar 3516C

Propulsion: 2 x Schottel SRP 1515CP

Class: BVI Hull + Mach,

Tug,

Unrestricted Navigation + AUT-UMS IWS

Designer: CintranaVal-Defcar

Bollard Pull: 72 TONS





FLEET

LIRIO

Hull Number:YX3261

Length: 32m

Beam: 11,60m

Depth: 5,36m

Gross Tonnage: 472 TONS

Net Tonnage: 141 TONS

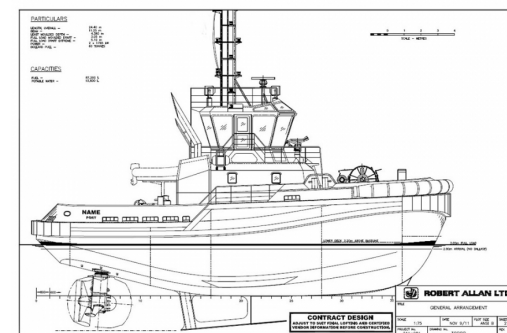
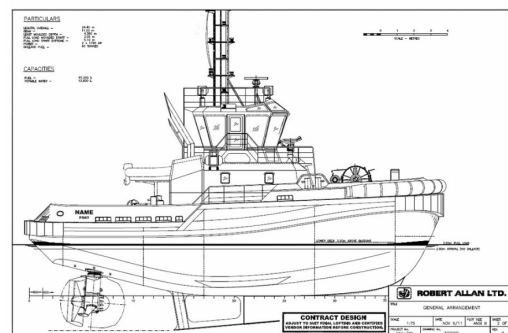
Engines: 2 x Caterpillar 3516C, 2.682hp

Propulsion: 2 x Schottel SRP 1515FP

Class: +100A1 Tug,
FI-FI Ship I (2400m³/h) water spraying,
LMC

Designer: Robert Allan Ltd. ASD 3200

Bollard Pull: 78 TONS



TULIPÁN

Hull Number:YX3262

Length: 32m

Beam: 11,60m

Depth: 5,36m

Gross Tonnage: 472 TONS

Net Tonnage: 141 TONS

Engines: 2 x Caterpillar 3516C, 2.682hp

Propulsion: 2 x Schottel SRP 1515FP

Class: +100A1 Tug,
FI-FI Ship I (2400m³/h) water spraying,
LMC

Designer: Robert Allan Ltd. ASD 3200

Bollard Pull: 78 TONS



FLEET

BROMELIA

Hull Number:YX3267

Lenght: 22m

Beam: 8,40m

Depht: 4,3m

Engines: 2 × Caterpillar 3512C

Propulsion: 2 × Schottel SRP 1012FP

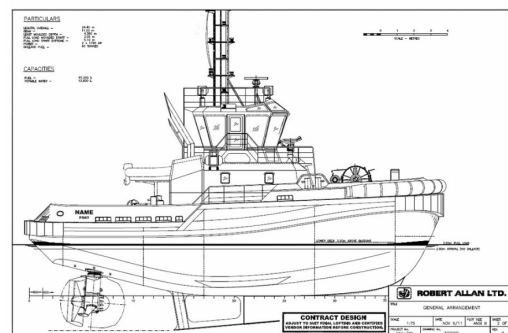
Class: BVI Hull + Mach,

Tug,

Unrestricted Navigation + AUT-UMS IW

Designer: CNV Naval Architects

Bollard Pull: 40MT



FLEET

MAGNOLIA

Hull Number:YX3266

Lenght: 22m

Beam: 8,40m

Depht: 4,3m

Engines: 2 × Caterpillar 3512C

Propulsion: 2 × Schottel SRP 1012FP

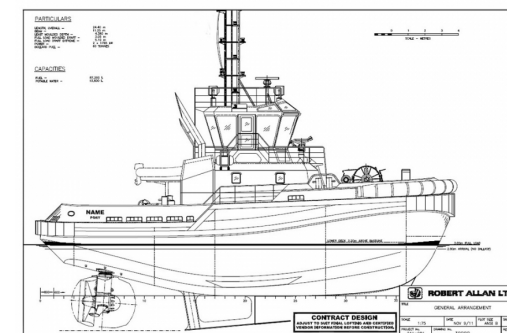
Class: BVI Hull + Mach,

Tug,

Unrestricted Navigation + AUT-UMS IW

Designer: CNV Naval Architects

Bollard Pull: 40MT





FLEET

ORQUÍDEA

Hull Number: YX3259

Length: 32m

Beam: 11,60m

Depth: 5,36m

Gross Tonnage: 472 TONS

Net Tonnage: 141 TONS

Engines: 2 × Caterpillar 3516C

Propulsion: 2 × Schottel SRP 1515FP

Class: BVI Hull + Mach,

Tug,

Unrestricted Navigation + AUT-UMS IW

Designer: Robert Allan

Bollard Pull: 75TONS

